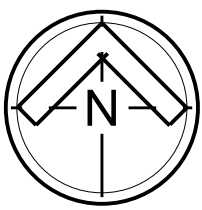


STATE OF MICHIGAN
DEPARTMENT OF TECHNOLOGY, MANAGEMENT AND BUDGET
FOR DEPARTMENT OF CORRECTIONS
ST. LOUIS CORRECTIONAL FACILITY (SLF) - HU 4 SMART PROGRAM

8585 N CROSWELL ROAD,
ST. LOUIS, MI 48880
FILE NUMBER: 472/26266.CTS

MECHANICAL/ELECTRICAL ENGINEER
MATRIX CONSULTING ENGINEERS, INC.
544 CHERBOURG DRIVE
LANSING, MI 48917
(517) 487-2511

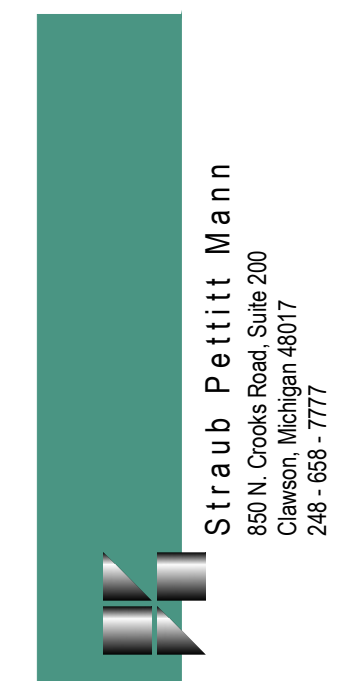
MATRIX PROJECT NUMBER: 260532.00



SITE MAP

DRAWING INDEX	
A-000	TITLE SHEET
A1	FLOOR PLANS
A2	SECTIONS AND DETAILS
P-100	PLUMBING SYMBOLS, NOTES, AND ABBREVIATIONS
P-300	HU 4 - START PROGRAM - UPPER LEVEL - DEMOLITION
P-400	HU 4 - START PROGRAM - LOWER LEVEL - NEW
P-401	HU 4 - START PROGRAM - UPPER LEVEL - NEW
E-100	ELECTRICAL SYMBOLS, NOTES, AND ABBREVIATIONS
E-300	HU 4 - START PROGRAM - UPPER LEVEL - DEMOLITION
E-500	HU 4 - START PROGRAM - LOWER LEVEL - NEW
E-501	HU 4 - START PROGRAM - UPPER LEVEL - NEW

ST. LOUIS CORRECTIONAL FACILITY
HU 4 – START PROGRAM
8585 N CROSWELL RD,
ST. LOUIS, MI 48880



ST. LOUIS CORRECTIONAL FACILITY
HU 4 – START PROGRAM
8585 N. CROSWELL ROAD
ST. LOUIS, MI 48880

STATE OF MICHIGAN
DEPARTMENT OF TECHNOLOGY, MANAGEMENT AND BUDGET
STATE FACILITIES ADMINISTRATION
DESIGN AND CONSTRUCTION DIVISION
ADAM P. LACH, RA, DIRECTOR

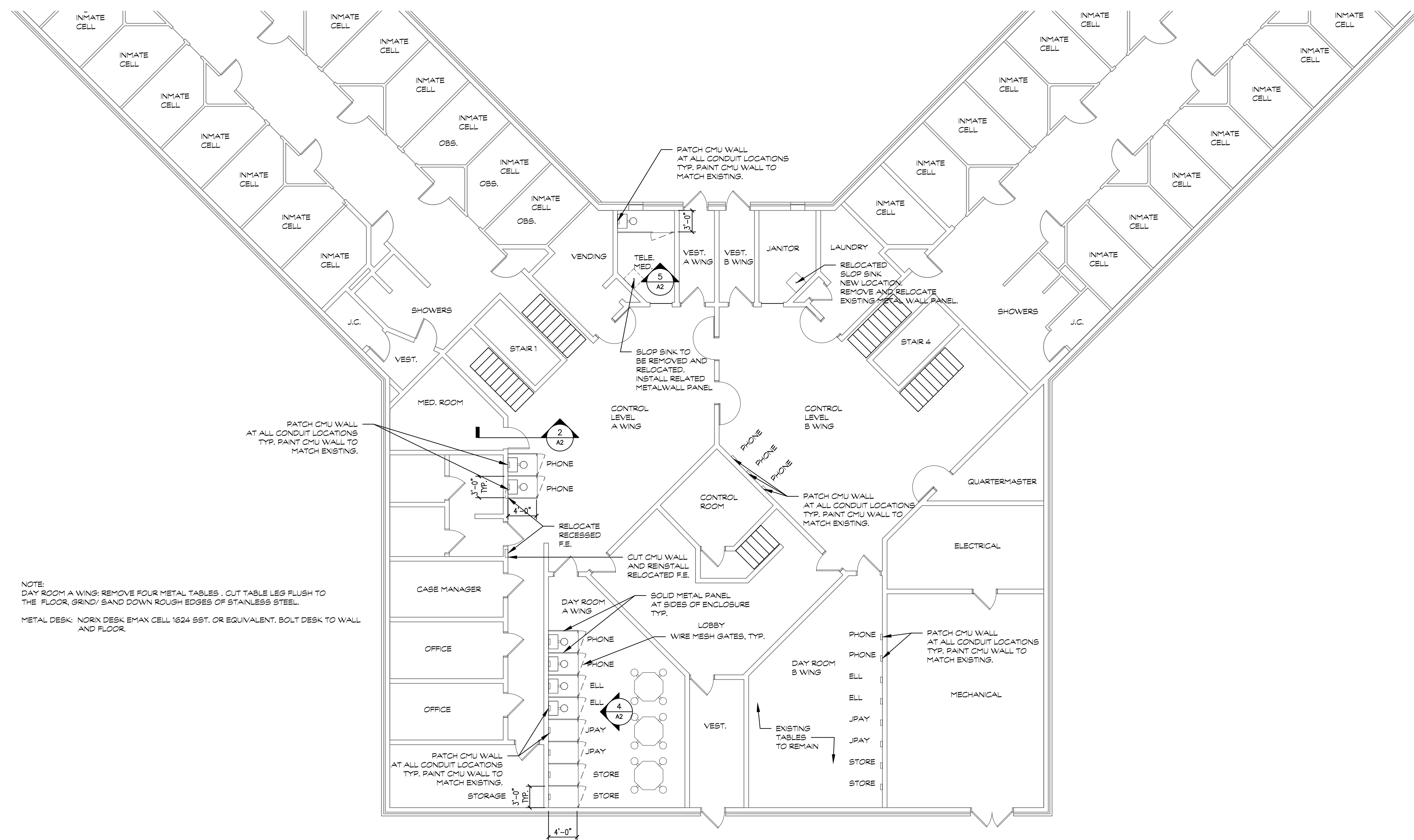


472.26266.C15

continued order on

consultant job no.

sheet no.

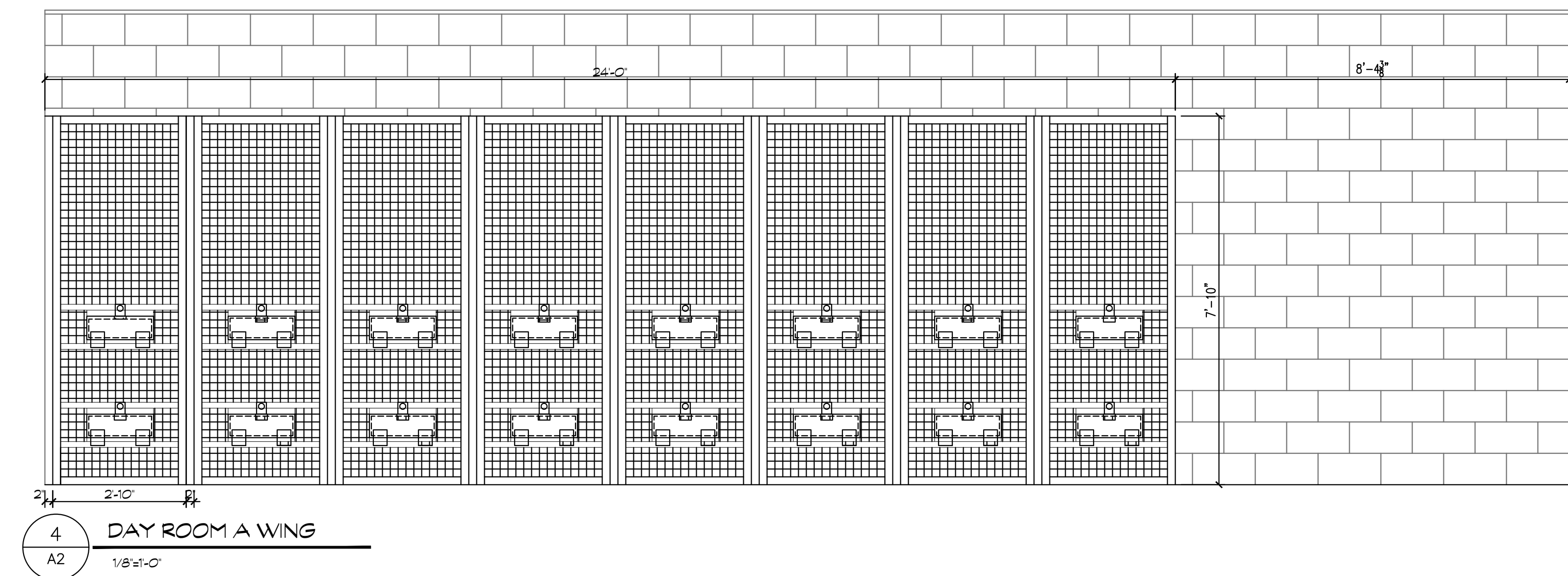
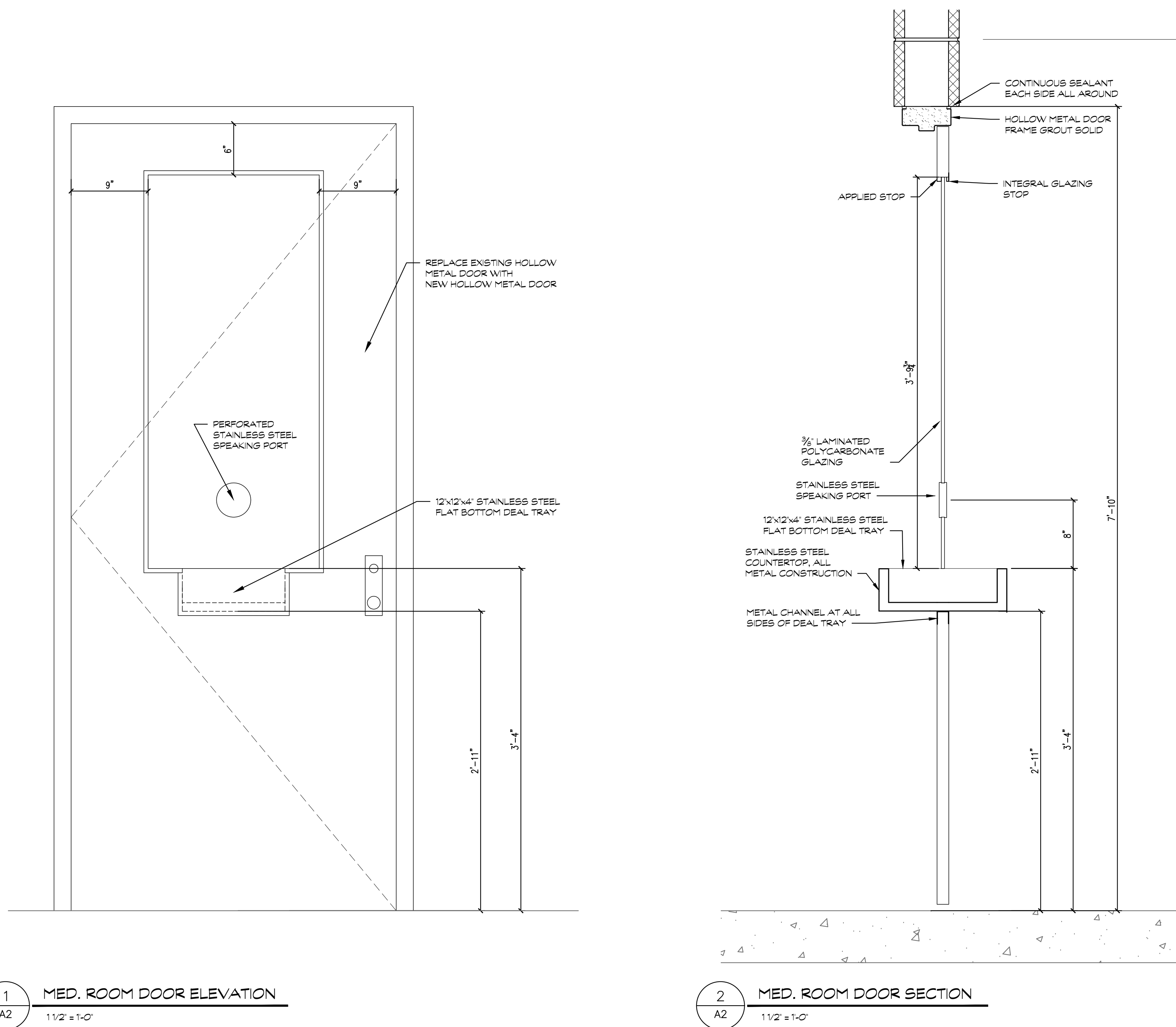


NOTE:
DAY ROOM A WING: REMOVE FOUR METAL TABLES . CUT TABLE LEG FLUSH TO THE FLOOR, GRIND/ SAND DOWN ROUGH EDGES OF STAINLESS STEEL.

METAL DESK: NORIX DESK EMAX CELL 1624 SST. OR EQUIVALENT. BOLT DESK TO WALL AND FLOOR.

1 HOUSING UNIT 4
A1 1/8"=1'-0"

A1

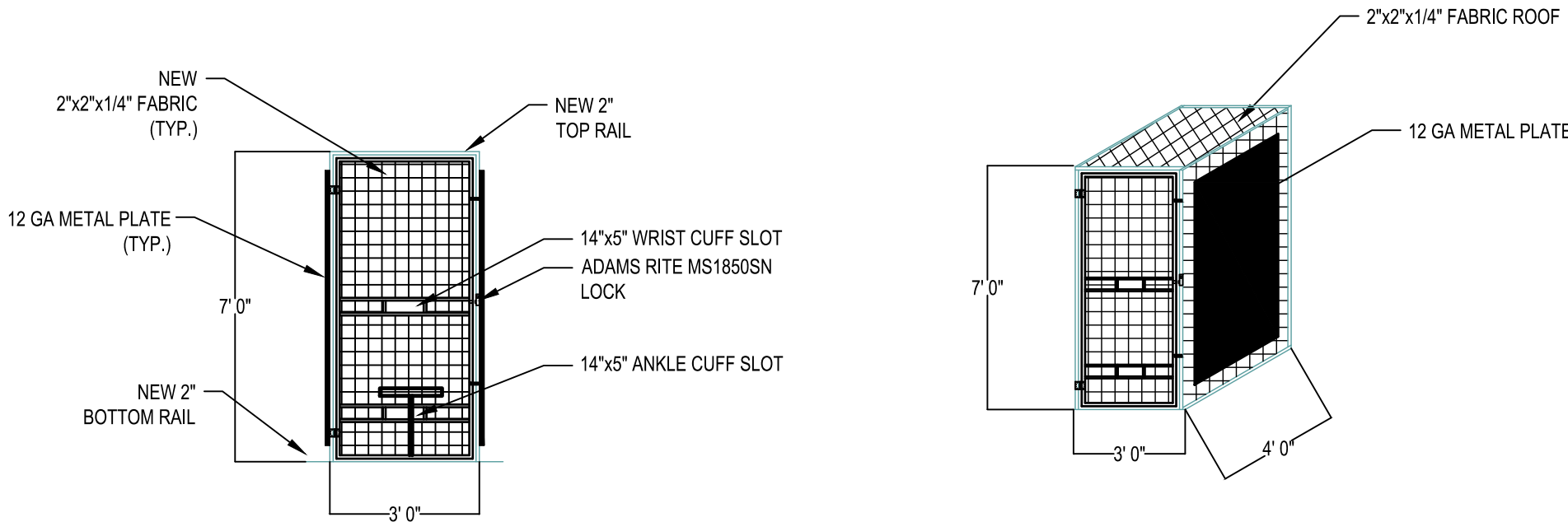


PLUMBING ABBREVIATIONS

AD	AREA DRAIN	NTS	NOT TO SCALE
ASR	AUTOMATIC SPRINKLER RISER	ORD	OVERFLOW ROOF DRAIN
BFS	BELOW FLOOR SLAB	OXY	OXYGEN
BWV	BACK WATER VALVE		
CB	CATCH BASIN	P	PUMP
CI	CAST IRON	PD	PRESSURE DROP
CO	CLEAN OUT	PVC	POLY-VINYL-CHLORIDE
CV	CONTROL VALVE		
DF	DRINKING FOUNTAIN	RC	RAIN CONDUCTOR
DIA	DIAMETER	RD	ROOF DRAIN
DN	DOWN	RI	ROUGH-IN
DWH	DOMESTIC WATER HEATER	REQD	REQUIRED
E.T.C.	ELECTRICAL TRADES CONTRACTOR	SAN	SANITARY
EWG	ELECTRIC WATER COOLER	SHWR	SHOWER
EXIST	EXISTING	SK	SINK
		SP	STAND PIPE
FD	FLOOR DRAIN	SQ. FT.	SQUARE FEET
FC	FINAL CONNECTIONS	SS	SERVICE SINK
FDC	FIRE DEPT. CONNECTION	ST	STORM
FF	FINISH FLOOR	S&W	STOP & WASTE
PHV	FIRE HOSE VALVE	STR	STRAINER
FT	FEET	SV	STACKED VENT
		TYP.	TYPICAL
GAL	GALLON	UR	URINAL
GD	GARBAGE DISPOSAL		
GI	GREASE INTERCEPTOR	VB	VACUUM BREAKER
GPH	GALLONS PER HOUR	VS	VENT STACK
GPM	GALLONS PER MINUTE	V.F.D	VARIABLE FREQUENCY DRIVE
		VTR	VENT THRU ROOF
HB	HOSE BIB	W	WASTE
HD	HEAD (FT)	WB	WET BULB
HP	HORSE POWER	WC	WATER CLOSET
		WH	WALL HYDRANT
ID	INSIDE DIAMETER	WS	WASTE STACK
I.E.	INVERT ELEVATION	W&V	WASTE AND VENT
LAV	LAVATORY	X-CW	EXIST. CW PIPING
LT	LAUNDRY TRAY		ITEM
			EXISTING
MA	MEDICAL AIR		
MAX	MAXIMUM		
MGC	MEDICAL GAS CONSOLE		
MH	MAN HOLE		
MIR	MINIMUM		
MS	MOP SINK		
M.T.C.	MECHANICAL TRADES CONTRACTOR		

GENERAL PLUMBING NOTES

- ALL PLUMBING WORK SHALL CONFORM TO MICHIGAN PLUMBING CODE, LATEST APPLICABLE EDITION.
- INSTALL ALL EQUIPMENT, MATERIALS, AND ACCESSORIES PER MANUFACTURERS WRITTEN INSTRUCTIONS.
- INSTALL ISOLATION BALL VALVES @ ALL FIXTURE WATER SUPPLY LINES.
- ALL PIPE SIZES SHOWN ARE SERVICE SIZE. SIZE SLEEVES FOR 1" CLEAR SPACE BETWEEN PIPE AND SLEEVE FOR INSTALLATION OF MECHANICAL SEAL.
- CONTRACTOR SHALL DEMOLISH & REMOVE EXISTING PIPING, FITTINGS, & EQUIPMENT AS REQUIRED FOR NEW INSTALLATIONS. VALVE & CAP PIPING TO REMAIN.
- FIELD VERIFY LOCATIONS OF EXISTING PIPING THAT MAY CONFLICT WITH NEW CONSTRUCTION AND RELOCATE AS NEEDED.
- NOTIFY OWNER OF ANY PIPING DEMOLITION THAT MAY AFFECT NORMAL OPERATION OF OTHER AREAS.
- 2% SLOPE FOR ALL SANITARY PIPING 2-1/2" OR LESS IN DIAMETER, 1% SLOPE FOR ALL SANITARY PIPING 3" OR MORE IN DIAMETER.
- PROVIDE SHOCK STOPS FOR EVERY PLUMBING GROUP.
- PROVIDE AIR EMISSION DEVICES FOR EACH PLUMBING SYSTEM.
- THE CONTRACTOR SHALL FIELD VERIFY THE SIZES, LOCATION, ELEVATIONS, AND DETAILS OF ALL EXISTING CONDITIONS THAT MAY AFFECT THE WORK.
- THE CONTRACTOR SHALL BE RESPONSIBLE FOR MAINTAINING THE INTEGRITY OF ALL EQUIPMENT AND MATERIALS IN A "NEW" CONDITION DURING CONSTRUCTION.
- ALL WORK SHALL BE PERFORMED BY LICENSED CONTRACTORS AND SUBCONTRACTORS AS REQUIRED BY LAW.
- DESIGN AND CONSTRUCTION SHALL BE IN ACCORDANCE WITH THE CODES AND REGULATIONS ENFORCED BY LOCAL BUILDING OFFICIALS.
- IF THERE IS CONFLICTING INFORMATION IN THE PLANS OR SPECIFICATIONS THE MORE STRINGENT AND GREATER COST ITEM SHALL BE USED.
- DRAWINGS INDICATE REQUIRED SIZES AND POINTS OF TERMINATION OF PIPES AND SUGGESTED ROUTES. IT IS NOT INTENTION OF DRAWINGS TO INDICATE ALL NECESSARY OFFSETS. INSTALL WORK IN MANNER TO CONFORM TO STRUCTURE. AVOID OBSTRUCTIONS. PRESERVE HEADROOM AND KEEP OPENINGS AND PASSAGEWAYS CLEAR. DO NOT SCALE FROM DRAWINGS.
- ANY INFORMATION FOUND ON THE DRAWINGS AND NOT IN THE SPECIFICATIONS, OR FOUND IN SPECIFICATIONS AND NOT IN THE DRAWINGS, SHALL BE CONSIDERED AS TO BE INCLUDED IN BOTH THE SPECIFICATIONS AND THE DRAWINGS. ANY CONFLICT BETWEEN THE PLANS AND THE SPECIFICATIONS WILL BE INTERPRETED BY THE ARCHITECT. IN THE EVENT OF CONFLICT, FOR THE PURPOSE OF BIDDING, THE CONTRACTOR SHALL PRESUME THE MOST EXPENSIVE COMBINATION OF QUALITY AND QUANTITY OF WORK SHALL PREVAIL.
- ABUSE OF THE REQUEST FOR INFORMATION (RFI) PROCESS WILL NOT BE TOLERATED. RFIS REQUESTING INFORMATION ALREADY CONTAINED IN THE DESIGN DOCUMENTS, INVOLVING MEANS AND METHODS OF CONSTRUCTION, COORDINATION OF WORK BETWEEN TRADES, OR ITEMS NOT PREVIOUSLY AND THOROUGHLY INVESTIGATED AND RESEARCHED BY THE GENERAL CONTRACTOR WILL BE RETURNED UNANSWERED TO THE GENERAL CONTRACTOR. ALLOW TWO WEEKS FOR RFI RESPONSES FROM THE DESIGN TEAM.
- CONTRACTOR TO ATTEND A 6 MONTH AND 11 MONTH POST CONSTRUCTION MEETING WITH THE ENGINEER AND OWNER TO REVIEW AND FIX ISSUES DURING THE WARRANTY PERIOD.
- CONTRACTOR TO TRACK AND PROVIDE PAPERWORK TO OWNER OF THE AMOUNT OF MATERIAL BEING RECYCLED THROUGHOUT THE PROJECT.
- CONTRACTOR WILL HAVE ONE ESCORT AVAILABLE TO WORK WITH THROUGHOUT THE PROJECT.
- CONTRACTOR TO PATCH, PRIME, AND PAINT ALL WALL PENETRATIONS AS REQUIRED TO MATCH EXISTING.
- CONTRACTOR IS RESPONSIBLE FOR MAINTAINING DOMESTIC HOT WATER/DOMESTIC COLD WATER IN BUILDINGS THROUGHOUT THE PROJECT.
- CONTRACTOR TO NOTIFY THE FACILITY AT LEAST 1 DAY IN ADVANCE FOR ANY HOT WORK TO ALLOW THE OWNER TO DISABLE THE FIRE ALARM.
- ALL FASTENERS USED IN AREAS EXPOSED TO INMATES SHALL USE TAMPERPROOF SCREWS.
- ALL COORDINATION ITEMS AND/OR REQUIRED SYSTEM SHUTDOWNS MUST BE COORDINATED AND APPROVED BY MDOC 10 DAYS IN ADVANCE. CONTRACTOR TO PROVIDE DETAILED SCHEDULE OF WHAT IS GOING TO OCCUR AND WHAT WILL BE AFFECTED. CONTRACTOR TO ALSO PROVIDE MDOC WITH SAFETY AND BACKUP PLANS IF AN UNEXPECTED EVENT WERE TO OCCUR DURING THE COORDINATION ITEMS AND/OR REQUIRED SYSTEM SHUTDOWNS.
- CONTRACTOR TO REFER TO ALL ELECTRICAL CONSTRUCTION DOCUMENTS AND DIVISION 26 SPECIFICATIONS FOR CONTROL WIRING RACEWAYS. ALL CONTROL WIRING RACEWAYS ARE TO MEET MDOC REQUIREMENTS.
- ALL WIRING AND CONDUIT TO BE CONCEALED IN WALL OR ABOVE CEILING, EXCEPT FOR IN LOCKED MECHANICAL SPACES.



1 SMART PROGRAM MODULE - DETAIL
SCALE: N.T.S.

PLUMBING SYMBOLS LEGEND

PLUMBING PIPING

— CW —	COLD WATER
— CW —	COLD WATER BELOW FINISH SLAB
— HW —	HOT WATER
— HW —	HOT WATER BELOW FINISH SLAB
— HWR —	HOT WATER RETURN
— HWR —	HOT WATER RETURN BELOW FINISH SLAB
— SW —	SOFTENED WATER
— SW —	SOFTENED WATER BELOW FINISH SLAB
— SWR —	SOFTENED WATER RETURN
— SWR —	SOFTENED WATER RETURN BELOW FINISH SLAB
— TW —	TEMPERED WATER
— TW —	TEMPERED WATER BELOW FINISH SLAB
— TWR —	TEMPERED WATER RETURN
— TWR —	TEMPERED WATER RETURN BELOW FINISH SLAB
— DI —	DEIONIZED WATER
— DI —	DEIONIZED WATER BELOW FINISH SLAB
— RO —	REVERSE OSMOSIS WATER
— RO —	REVERSE OSMOSIS WATER RETURN BELOW FINISH SLAB
— FP —	FIRE PROTECTION
— G —	GAS (NATURAL)
— LP —	GAS (LIQUID PETROLEUM)
— ARV —	ACID RESISTANT
— ARW —	VENT ACID RESISTANT WASTE
— ARW —	ACID RESISTANT WASTE BELOW FINISH SLAB
— RC —	RAIN CONDUCTOR
— ST —	STORM BELOW FINISH SLAB
— ORC —	OVERFLOW RAIN CONDUCTOR
— ORC —	OVERFLOW RAIN CONDUCTOR BELOW FINISH SLAB
— SAN —	SANITARY WASTE
— SAN —	SANITARY WASTE BELOW FINISH SLAB
— V —	VENT PIPING
— V —	VENT PIPING BELOW FINISH SLAB
— CA —	COMPRESSED AIR
— O2 —	OXYGEN
— NO —	NITROUS OXIDE
— N2 —	NITROGEN
— MA —	MEDICAL AIR
— VAC —	VACUUM
— — —	DEMOLITION

PLUMBING VALVES

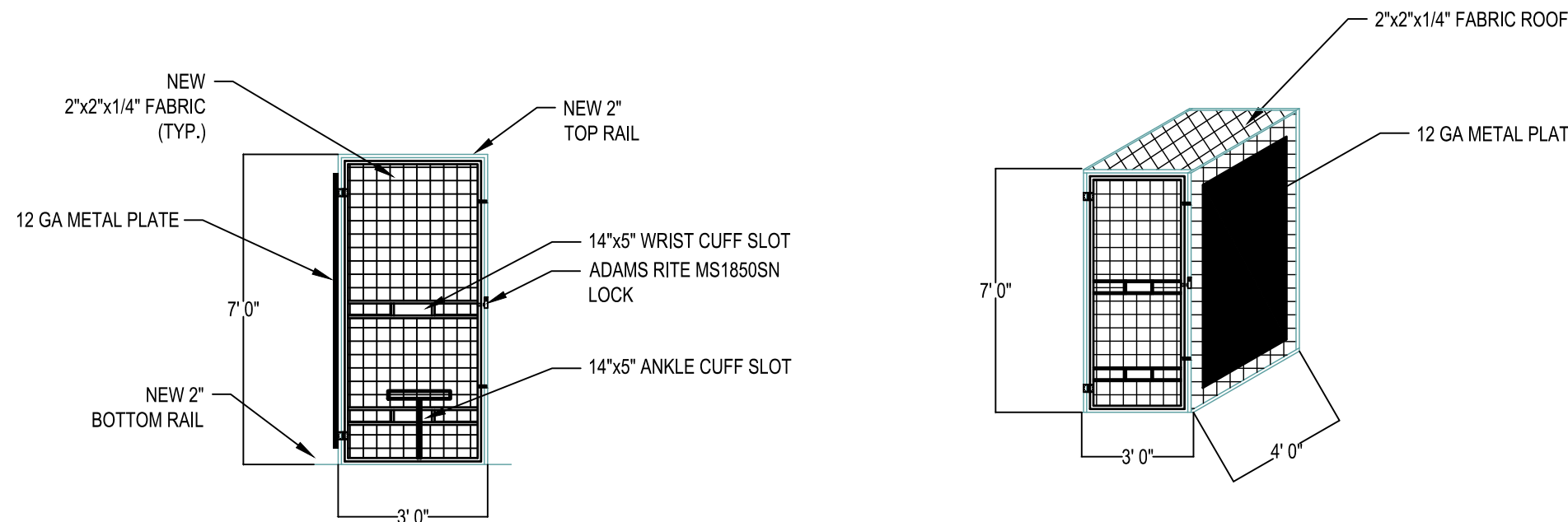
— GATE VALVE
— GAS COCK
— CHECK VALVE
— BALANCE COCK
— CIRCUIT SETTER
— TWO-WAY CONTROL VALVE
— THREE-WAY CONTROL VALVE
— GLOBE VALVE
— BALL VALVE
— OS&Y VALVE
— SOLENOID VALVE
— EXPANSION VALVE WITH THERMOSTATIC BULB
— PLUG VALVE
— BUTTERFLY VALVE
— RELIEF VALVE
— HOSE & DRAIN END VALVE
— PRESSURE RELIEF VALVE
— PRESSURE REDUCING VALVE
— TRIPLE DUTY VALVE
— GAS PRESSURE REGULATOR
— STRAINER (BLOW-OFF)

MISCELLANEOUS NOTES

— POINT OF CONNECTION BETWEEN NEW AND EXISTING
— POINT OF EXISTING TO REMAIN AND EXISTING TO BE REMOVED
— INDICATES PLAN NOTE
— INDICATES DEMOLITION NOTE
— DETAIL BUBBLE
— DETAIL NUMBER
— PAGE LOCATION INDICATES
— DIRECTION OF DETAIL SECTION

PLUMBING EQUIPMENT

— FLOW DIRECTION
— PIPING DROP
— PIPING RISE
— FLOOR CLEANOUT
— INLINE PIPING DROP
— INLINE PIPING RISE
— PIPING TEE
— PIPING ELBOW
— INLINE CLEANOUT
— PLUMBING TRAP
— THERMOMETER
— CONNECTION
— PUMP
— UNION
— PIPE ANCHOR
— PIPE GUIDE
— FLOOR DRAIN & FLOOR SINK
— BACK FLOW PREVENTER
— FLANGE END CONNECTION
— WALL HYDRANT & HOSE BIBB
— REGULAR & OVERFLOW ROOF DRAIN
— PIPE CAP
— PIPE BREAK
— WATER METER
— GAS METER
— PRESSURE GAUGE
— FIRE HYDRANT
— SPRINKLER HEAD (PENDANT)
— SPRINKLER HEAD (UPRIGHT)
— SPRINKLER HEAD (SIDEWALL)
— FIRE DEPARTMENT CONNECTION
— PIPING FLEXIBLE CONNECTOR
— SIGHT GLASS
— PIPE EXPANSION
— COMPENSATOR FLOW SENSOR DEVICE
— FLOW METER
— FLOW SWITCH
— PRESSURE SWITCH
— SUPERVISORY SWITCH INVERTED
— BUCKET TRAP
— FLOAT & THERMOSTATIC TRAP



2 PHONE MODULE - DETAIL
SCALE: N.T.S.

checked by
JFS

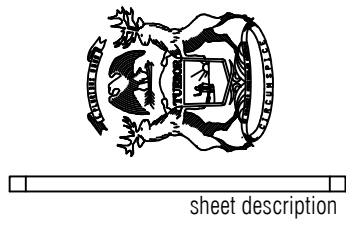
drawn by
NUJ

consultant



ST. LOUIS CORRECTIONAL FACILITY
HU 4 – START PROGRAM
8585 N CROSWELL RD,
ST. LOUIS, MI 48880

STATE OF MICHIGAN
DEPARTMENT OF TECHNOLOGY, MANAGEMENT AND BUDGET
STATE FACILITIES ADMINISTRATION
DESIGN AND CONSTRUCTION DIVISION
ADAM P. LACH, RA DIRECTOR



PLUMBING SYMBOLS,
NOTES, AND
ABBREVIATIONS

file no.
472/26266.CTS

funding code

contract order no.

consultant job no.
260532.00

SHEET NUMBER

MECHANICAL DEMOLITION NOTES

1 DISCONNECT, REMOVE, AND RELOCATE EXISTING WALL MOUNTED CIRCULATING FAN, WALL BRACKET, AND ALL ASSOCIATED ACCESSORIES.

PLUMBING DEMOLITION NOTES

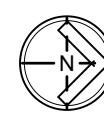
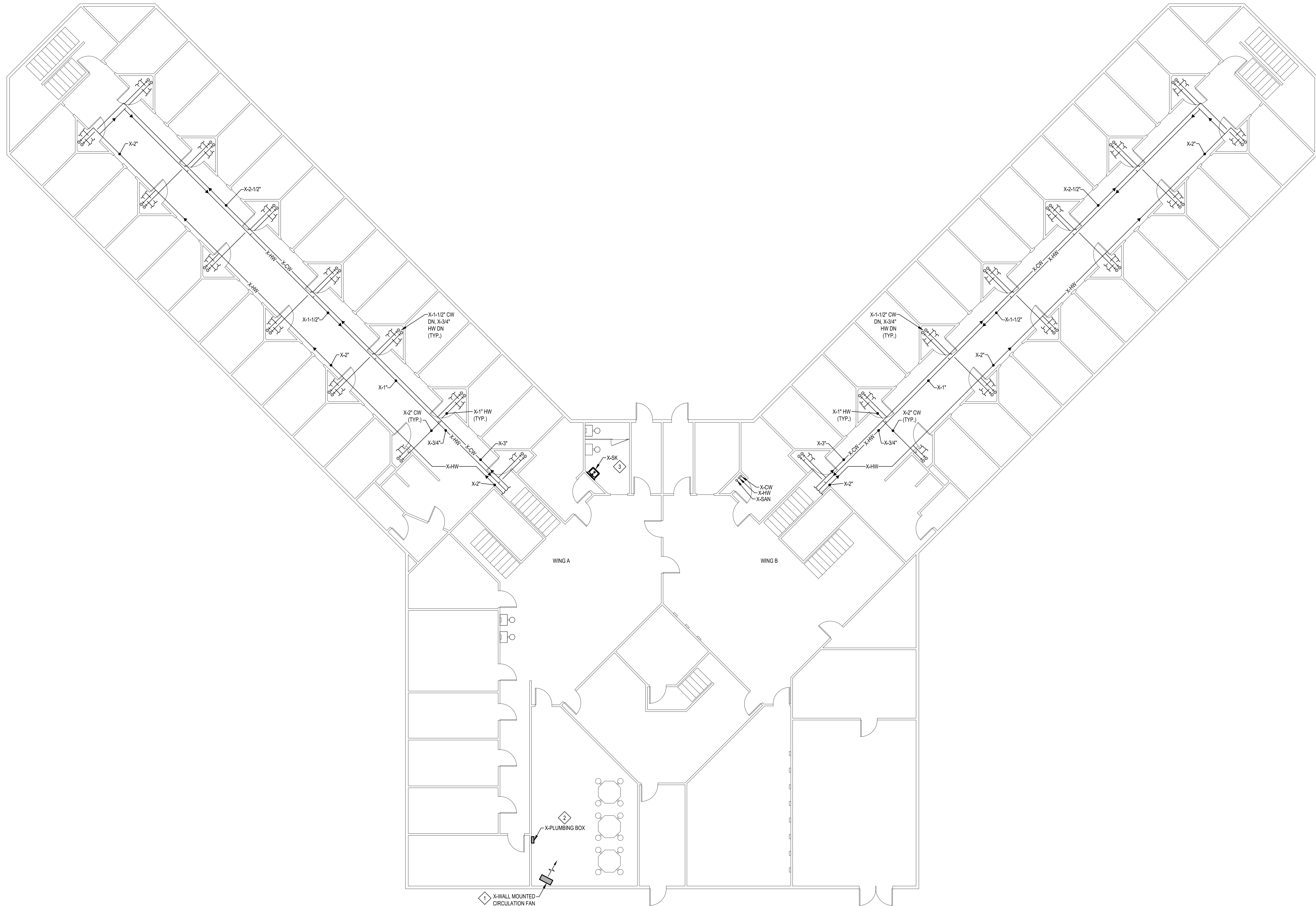
2 DISCONNECT, REMOVE, AND DEMO EXISTING PLUMBING BOX, PIPING, AND ALL ASSOCIATED ACCESSORIES BACK INTO WALL AND CAP. WALL TO BE PATCHED, PRIMED, AND PAINTED TO MATCH EXISTING.

3 DISCONNECT, REMOVE, AND RELOCATE EXISTING SINK AND ALL ASSOCIATED ACCESSORIES. DEMO DOMESTIC COLD WATER, DOMESTIC HOT WATER, AND SANITARY PIPING BACK TO MAIN IN CHASE AND CAP. WALL TO BE PATCHED, PRIMED, AND PAINTED TO MATCH EXISTING.

checked by
JFS

drawn by
NUJ

consultant



HU 4 - START PROGRAM - UPPER LEVEL - DEMOLITION

SCALE: 1/8" = 1'-0"

ST. LOUIS CORRECTIONAL FACILITY
HU 4 - START PROGRAM
8585 N CROSWELL RD,
ST. LOUIS, MI 48880

STATE OF MICHIGAN
DEPARTMENT OF TECHNOLOGY, MANAGEMENT AND BUDGET
STATE FACILITIES ADMINISTRATION
DESIGN AND CONSTRUCTION DIVISION
ADAM P. LACH, RA, DIRECTOR



sheet description

HU 4 - START PROGRAM -
UPPER LEVEL -
DEMOLITION

file no.
472/26266.CTS

funding code

contract order no.

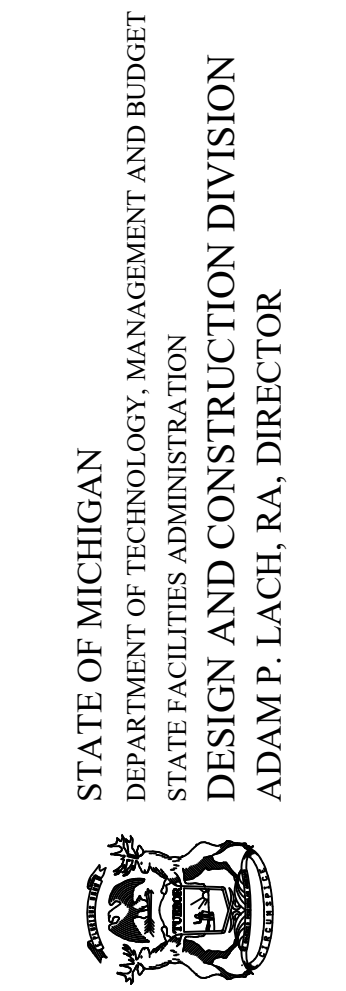
consultant job no.
260532.00

SHEET NUMBER

checked by
JFS
drawn by
NUJB
consultant



ST. LOUIS CORRECTIONAL FACILITY
HU 4 - START PROGRAM
8585 N CROSWELL RD,
ST. LOUIS, MI 48880



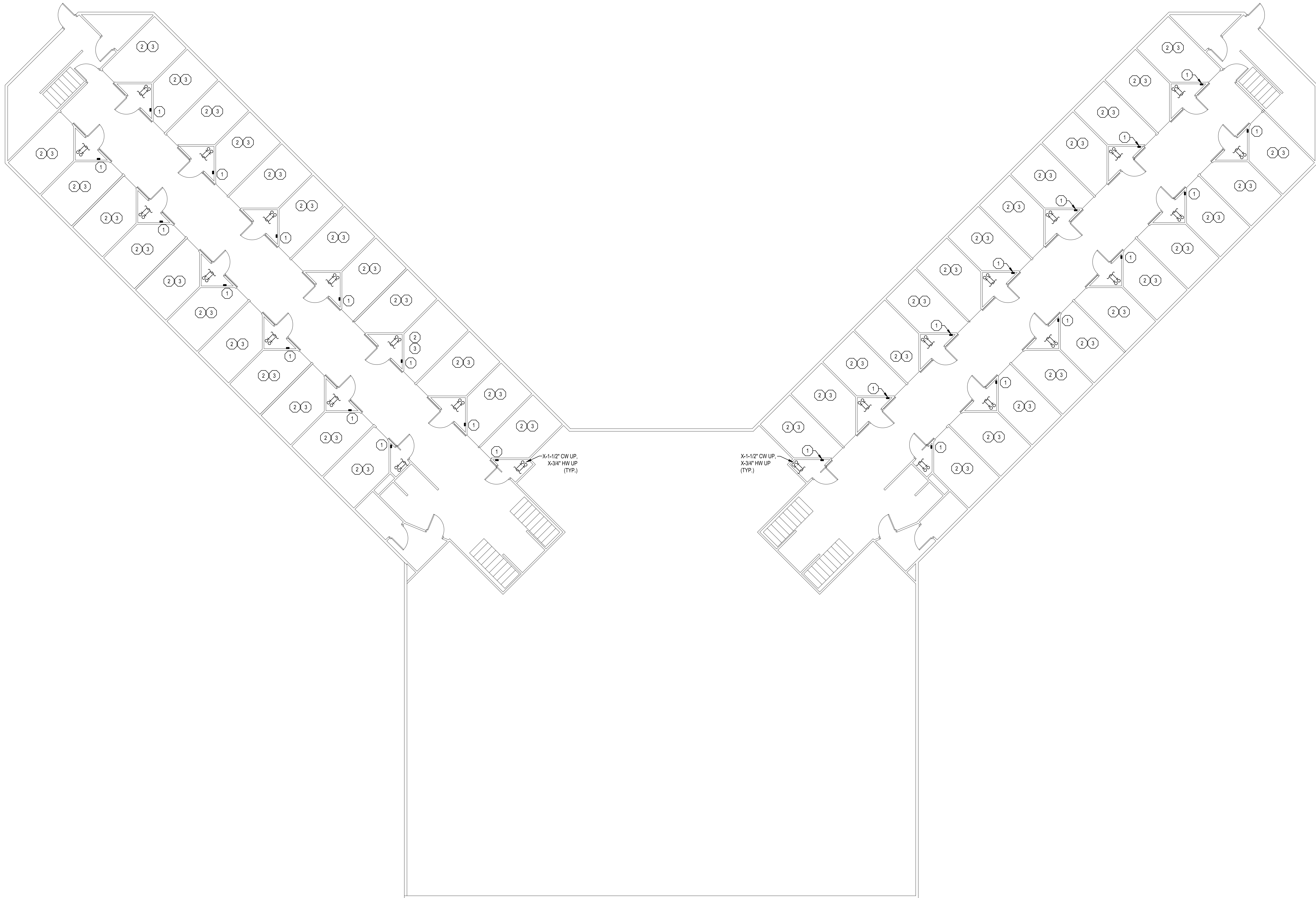
HU 4 - START PROGRAM -
LOWER LEVEL - NEW

file no.
472/26266.CTS
funding code
contract order no.
consultant job no.
260532.00
SHEET NUMBER

P-400

PLUMBING KEY NOTES

1. INSTALL NEW I-CON 100191 (8 INPUT / 8 OUTPUT, 24 VAC) CONTROLLER AND ALL ASSOCIATED ACCESSORIES IN PLUMBING CHASE AS SHOWN PER THE MANUFACTURER'S INSTALLATION INSTRUCTIONS. CONNECT NEW I-CON CONTROLLER TO NEW I-CON FLUSH VALVE AND NEW I-CON MANIFOLD LAV VALVE FOR BOTH ADJACENT LOWER LEVEL CELLS.
2. REPLACE EXISTING WATER CLOSET FLUSH VALVE WITH I-CON 100290 FLUSH VALVE. REPLACE PUSH BUTTON WITH I-CON 100215 TOUCH SENSOR. USE I-CON CORE DRILL ASSEMBLY AS REQUIRED FOR TOUCH SENSOR.
3. REPLACE EXISTING PNEUMATIC LAV VALVE WITH I-CON 100474 MANIFOLD LAV VALVE. REPLACE (2) PUSH BUTTONS WITH I-CON 100215 TOUCH SENSORS. USE I-CON CORE DRILL ASSEMBLY AS REQUIRED FOR TOUCH SENSOR.



GENERAL NOTES

- CONTRACTOR TO CUT, PATCH, PRIME, AND PAINT CEILINGS AND WALLS AS NEEDED TO ROUTE 24V AND 120V WIRING FOR A COMPLETE AND OPERABLE SYSTEM.
- CONTRACTOR TO REMOVE AND REINSTALL LIGHT FIXTURES AS NEEDED TO ROUTE 24V AND 120V WIRING FOR A COMPLETE AND OPERABLE SYSTEM.

FENCE KEY NOTES

- CONTRACTOR TO INSTALL NEW 4X3X7' CAGE PER DETAIL 1 ON SHEET P-100.
- CONTRACTOR TO INSTALL NEW 4X3X7' CAGE PER DETAIL 2 ON SHEET P-100.

MECHANICAL KEY NOTES

- INSTALL RELOCATED WALL MOUNTED CIRCULATION FAN, WALL BRACKET, AND ALL ASSOCIATED ACCESSORIES IN NEW LOCATION SHOWN. COORDINATE EXACT LOCATION WITH OWNER BEFORE INSTALLATION.

PLUMBING KEY NOTES

- INSTALL RELOCATED SINK AND ALL ASSOCIATED ACCESSORIES IN NEW LOCATION SHOWN AT ADA HEIGHT.
- INSTALL NEW 1-1/2" SANITARY PIPING, 1/2" HOT WATER PIPING, 1/2" COLD WATER PIPING, 1-1/2" VENT PIPING, ASSE 1070 MIXING VALVE, ADA INSULATION KIT, AND ALL ASSOCIATED ACCESSORIES IN THE LOCATION SHOWN TO CONNECT TO THE RELOCATED SINK. MODIFY EXISTING PIPING AS REQUIRED FOR NEW CONNECTION.
- INSTALL NEW I-CON 100191 (8 INPUT / 8 OUTPUT, 24 VAC) CONTROLLER AND ALL ASSOCIATED ACCESSORIES IN THE PLUMBING CHASE AS SHOWN PER THE MANUFACTURER'S INSTALLATION INSTRUCTIONS. CONNECT NEW I-CON CONTROLLER TO NEW I-CON FLUSH VALVE AND NEW I-CON MANIFOLD LAV VALVE FOR BOTH ADJACENT UPPER LEVEL CELLS. I-CON 100417 COMMUNICATION MODULE TO BE INSTALLED ON I-CON 100191 CONTROLLER TO COMMUNICATE WITH FACILITY. I-CON 100417 COMMUNICATION MODULE WILL COMMUNICATE WITH I-CON 104274 ENVISAGE WATER MANAGEMENT CONSOLE LOCATED IN CONTROL ROOM.
- REPLACE EXISTING WATER CLOSET FLUSH VALVE WITH I-CON 100290 FLUSH VALVE. REPLACE PUSH BUTTON WITH I-CON 100215 TOUCH SENSOR. USE I-CON CORE DRILL ASSEMBLY AS REQUIRED FOR TOUCH SENSOR.
- REPLACE EXISTING PNEUMATIC LAV VALVE WITH I-CON 100474 MANIFOLD LAV VALVE. REPLACE (2) PUSH BUTTONS WITH I-CON 100215 TOUCH SENSORS. USE I-CON CORE DRILL ASSEMBLY AS REQUIRED FOR TOUCH SENSOR.
- INSTALL I-CON BUCK AND BOOST TRANSFORMER IN PORTER'S CLOSET AS SHOWN. CONNECT TO I-CON CONTROLLER LOCATED IN PLUMBING CHASE FOR THE ASSOCIATED WING.

checked by
JFS
drawn by
NUB
consultant



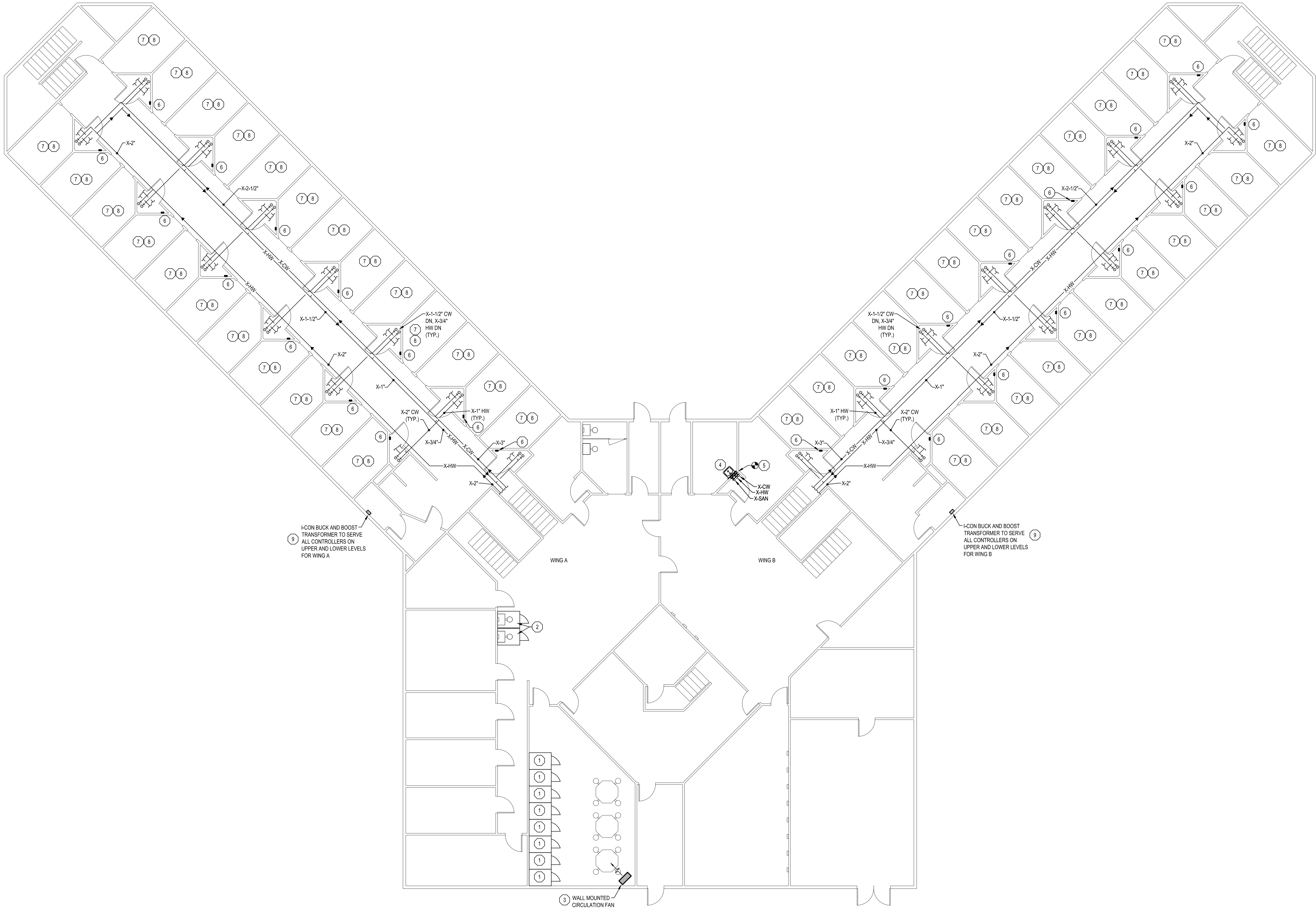
ST. LOUIS CORRECTIONAL FACILITY
HU 4 - START PROGRAM
8585 N CROSWELL RD,
ST. LOUIS, MI 48880

STATE OF MICHIGAN
DEPARTMENT OF TECHNOLOGY, MANAGEMENT AND BUDGET
STATE FACILITIES ADMINISTRATION
DESIGN AND CONSTRUCTION DIVISION
ADAM P. LACH, RA, DIRECTOR

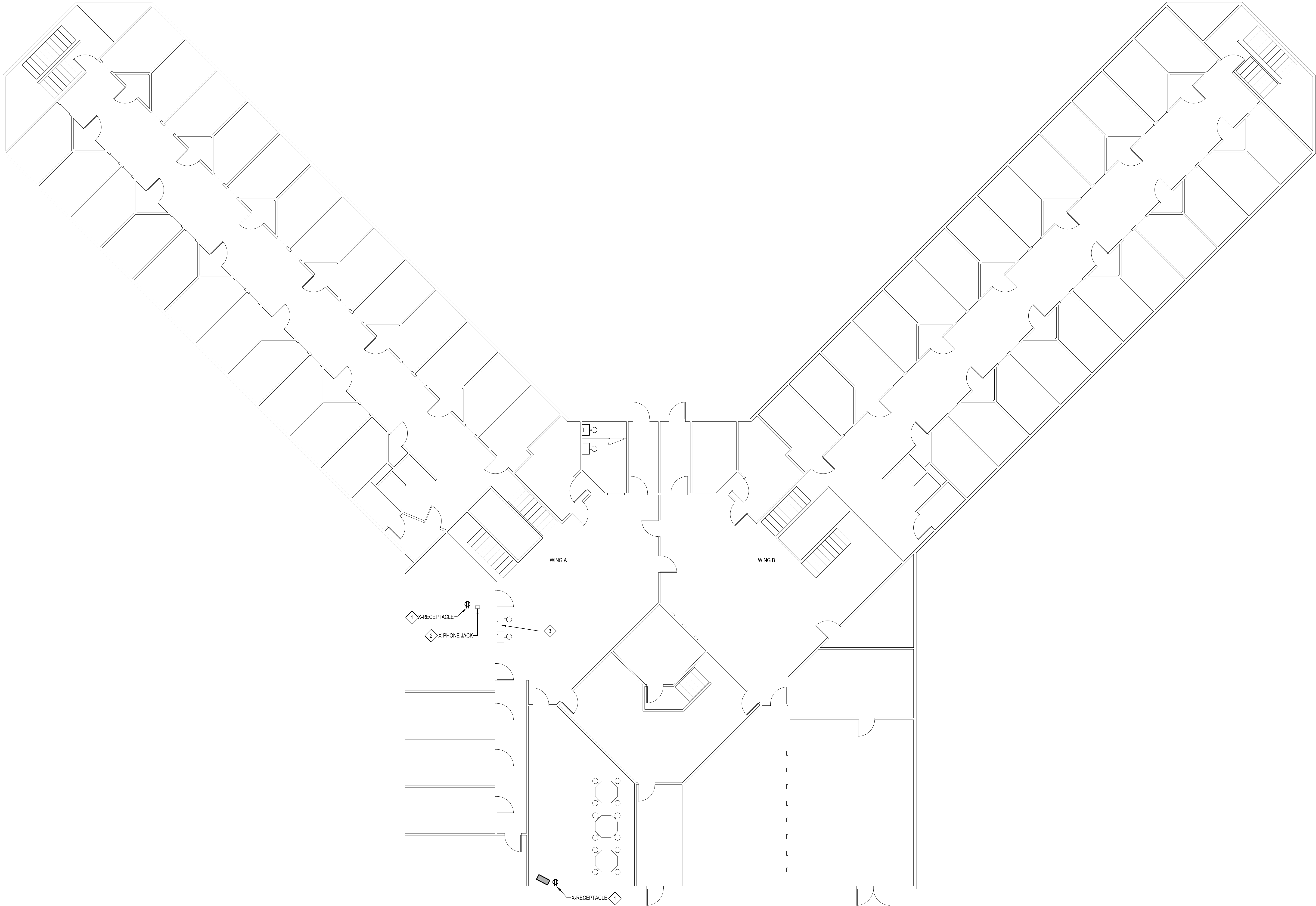


File no.
472/26266.CTS
funding code
contract order no.

consultant job no.
260532.00
SHEET NUMBER
P-401



HU 4 - START PROGRAM - UPPER LEVEL - NEW
SCALE: 1/8" = 1'-0"



ELECTRICAL DEMOLITION NOTES

- 1

DISCONNECT AND REMOVE EXISTING RECEPTACLE FOR FAN. CONDUIT AND WIRE SHALL BE MODIFIED FOR NEW FAN LOCATION. REFER TO NEW DRAWINGS FOR DETAILS.
- 2

DISCONNECT, REMOVE, AND DEMO EXISTING PHONE JACK AND ALL ASSOCIATED ACCESSORIES IN THEIR ENTIRETY.
- 3

DISCONNECT, REMOVE, AND SALVAGE EXISTING CONDUIT, WIRING AND ALL ASSOCIATED ACCESSORIES. WALL TO BE PATCHED, PRIMED, AND PAINTED TO MATCH EXISTING.

Issue date
06/22/2026 BID SET

checked by
JFS
drawn by
GMB / MJTC
consultant

MATRIX
CONSULTING ENGINEERS, INC.
644 CHERBOURG DR
ST. LOUIS, MO 63105
PHONE: 617.877.2511
FAX: 617.877.2512
WWW.MATRIXENGINEERS.COM
MATRIX PROJECT 260532.00


ST. LOUIS CORRECTIONAL FACILITY
HU 4 – START PROGRAM
8585 N CROSWELL RD,
ST. LOUIS, MI 48880

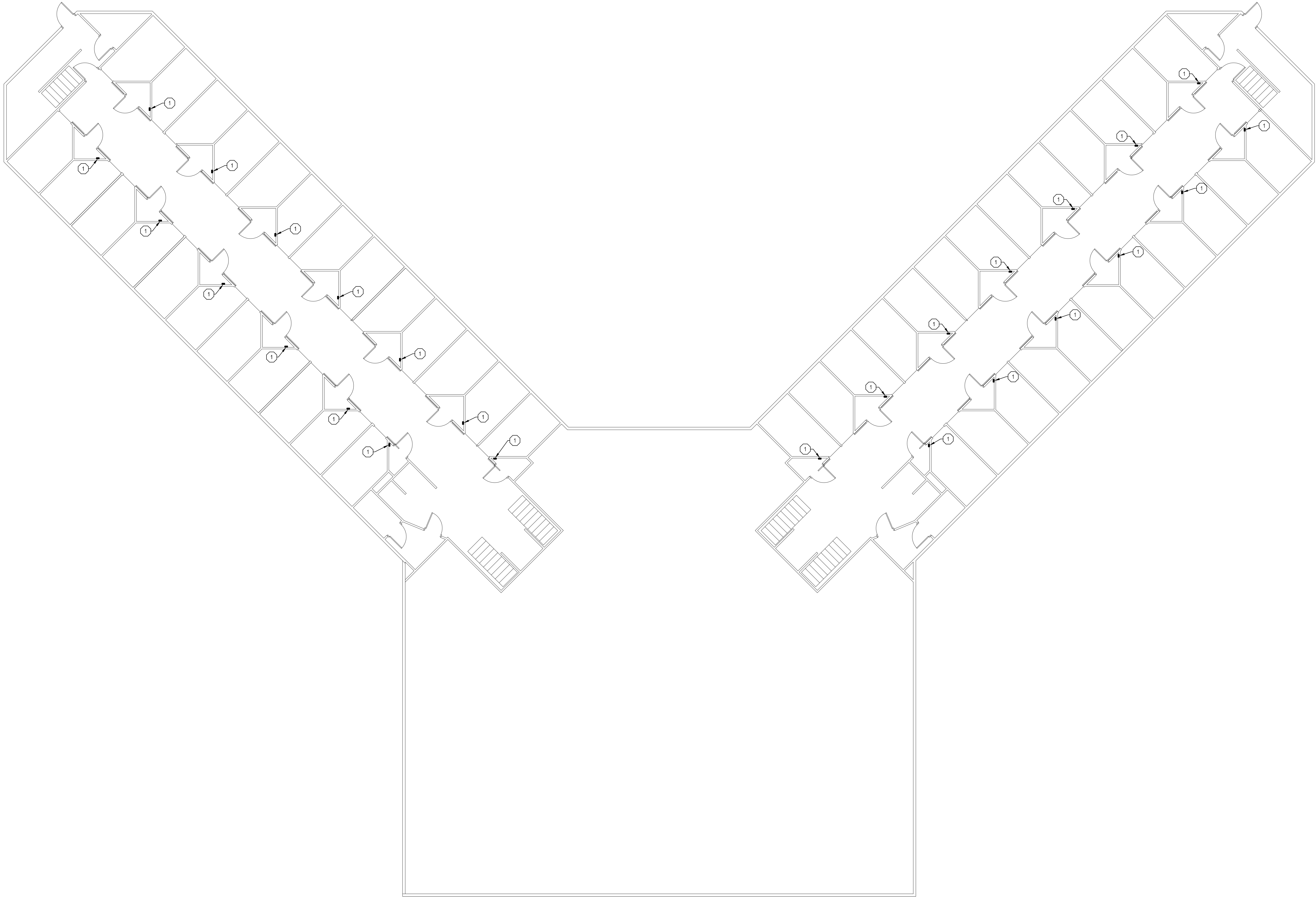
STATE OF MICHIGAN
DEPARTMENT OF TECHNOLOGY, MANAGEMENT AND BUDGET
STATE FACILITIES ADMINISTRATION
DESIGN AND CONSTRUCTION DIVISION
ADAM P. LACH, RA, DIRECTOR



Sheet description
HU 4 - START PROGRAM -
UPPER LEVEL -
DEMOLITION

file no.
472/26266.CTS
building code
contract order no.
consultant job no.
260532.00
SHEET NUMBER

 **HU 4 - START PROGRAM - UPPER LEVEL - DEMOLITION**
SCALE: 1/8" = 1'-0"
0 1 5 10 20



0 1 5 10 20
SCALE: 1/8" = 1'-0"

HU 4 - START PROGRAM - LOWER LEVEL - NEW

Issue date
06/22/2026 BID SET

checked by
JFS
drawn by
GMB / MJTC
consultant

GENERAL NOTES

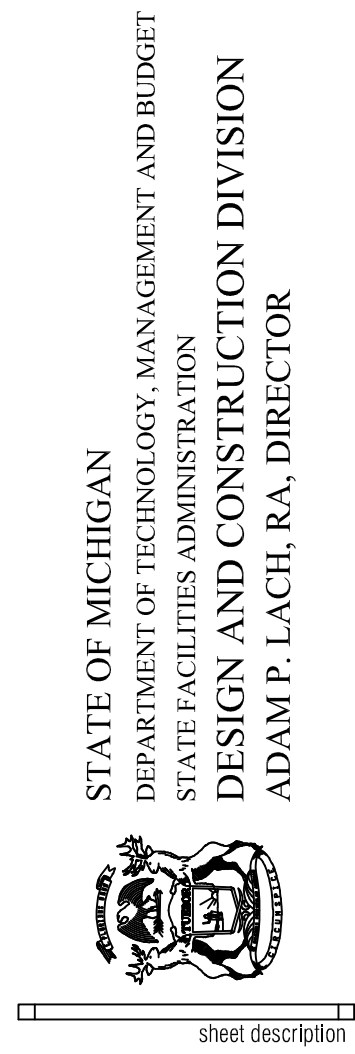
1. CONTRACTOR TO CUT, PATCH, PRIME, AND PAINT CEILINGS AND WALLS AS NEEDED TO ROUTE 24V AND 120V WIRING FOR A COMPLETE AND OPERABLE SYSTEM.
2. CONTRACTOR TO REMOVE AND REINSTALL LIGHT FIXTURES AS NEEDED TO ROUTE 24V AND 120V WIRING FOR A COMPLETE AND OPERABLE SYSTEM.

ELECTRICAL KEY NOTES

1. CONTRACTOR TO INSTALL 3/4" CONDUIT FOR LOW VOLTAGE WIRING FROM ICON CONTROLLER TO LOW VOLTAGE TRANSFORMER. PROVIDE LOW VOLTAGE WIRING PER MANUFACTURERS REQUIREMENTS. TRANSFORMER LOCATED ON UPPER LEVEL REFER TO SHEET E-500.



ST. LOUIS CORRECTIONAL FACILITY
HU 4 - START PROGRAM
8585 N CROSWELL RD,
ST. LOUIS, MI 48880



HU 4 - START
PROGRAM - UPPER
LEVEL - NEW

file no.
472/26266.CTS
funding code
contract order no.
consultant job no.
260532.00
SHEET NUMBER

E-500

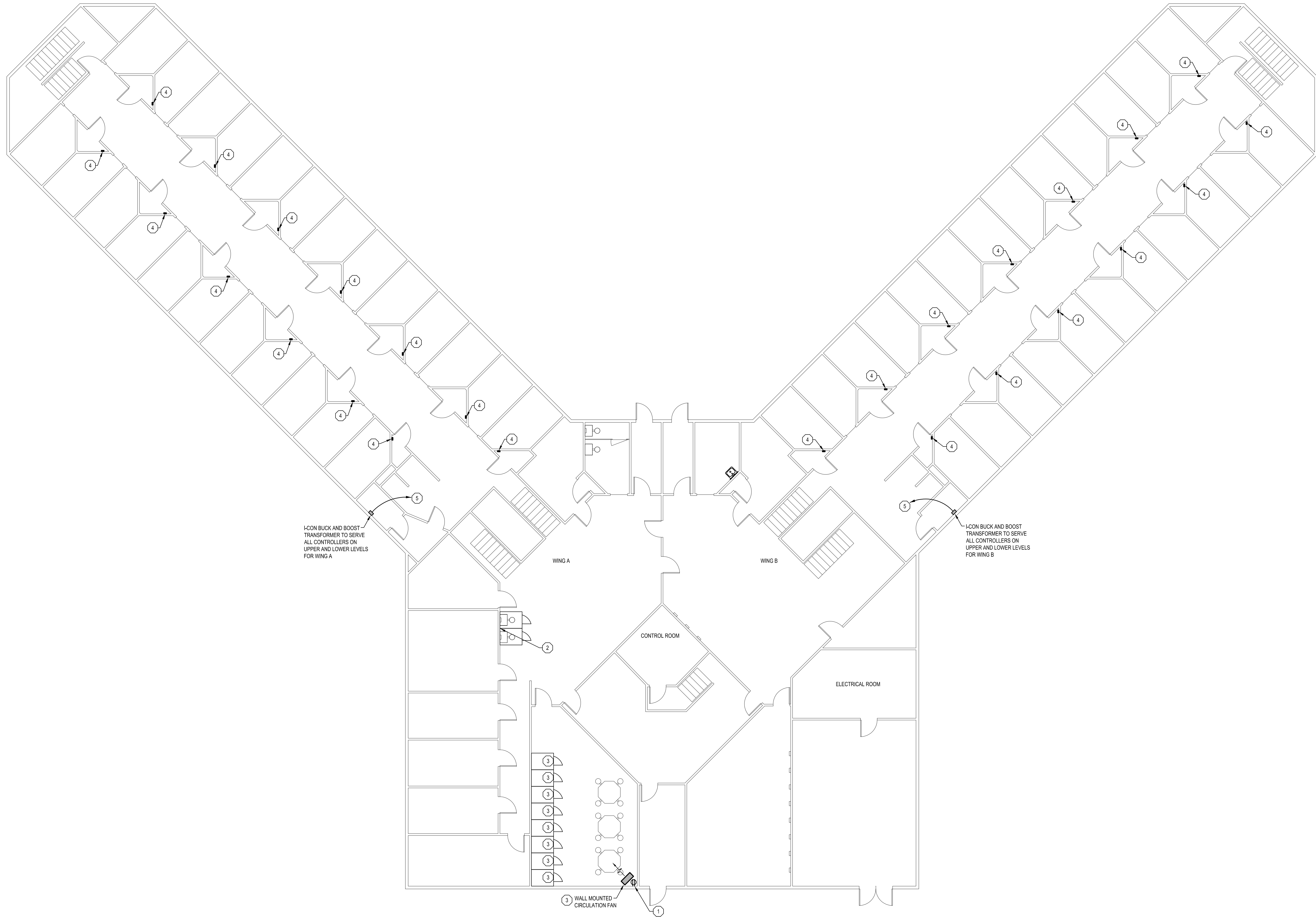
GENERAL NOTES

1. CONTRACTOR TO CUT, PATCH, PRIME, AND PAINT CEILINGS AND WALLS AS NEEDED TO ROUTE 24V AND 120V WIRING FOR A COMPLETE AND OPERABLE SYSTEM.
2. CONTRACTOR TO REMOVE AND REINSTALL LIGHT FIXTURES AS NEEDED TO ROUTE 24V AND 120V WIRING FOR A COMPLETE AND OPERABLE SYSTEM.

ELECTRICAL KEY NOTES

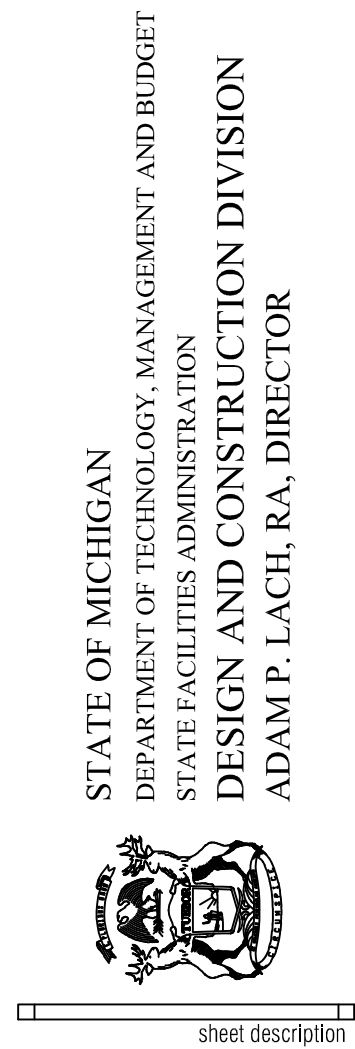
1. INSTALL NEW RECEPTACLE IN NEW LOCATION SHOWN. EXTEND EXISTING CONDUIT AND WIRING TO NEW LOCATION SHOWN. CONDUIT AND WIRING TO BE CONCEALED IN WALL.
2. INSTALL SALVAGED CONDUIT AND WIRING FOR NEW STATION.
3. CONTRACTOR TO ROUTE AND INSTALL CONDUIT AND WIRING FOR NEW STATION.
4. CONTRACTOR TO INSTALL 3/4" CONDUIT FOR LOW VOLTAGE WIRING FROM ICON CONTROLLER TO LOW VOLTAGE TRANSFORMER. PROVIDE LOW VOLTAGE WIRING PER MANUFACTURERS REQUIREMENTS.
5. PROVIDE AND INSTALL 20A-1P BREAKER IN NEAREST PANEL LOCATED IN THE ELECTRICAL ROOM ON THIS FLOOR TO PROVIDE POWER TO LOW VOLTAGE TRANSFORMER.

checked by
JFS
drawn by
GMB / MJTC
consultant



HU 4 - START PROGRAM - UPPER LEVEL - NEW
SCALE: 1/8" = 1'-0"

ST. LOUIS CORRECTIONAL FACILITY
HU 4 - START PROGRAM
8585 N CROSWELL RD,
ST. LOUIS, MI 48880



HU 4 - START PROGRAM -
UPPER LEVEL - NEW

file no.
472/26266.CTS
building code
contract order no.
consultant job no.
260532.00
SHEET NUMBER